



IN REPLY REFER TO:

United States Department of the Interior

FISH AND WILDLIFE SERVICE
110 S. Amity Road, Suite 300
Conway, Arkansas 72032
Tel.: 501/513-4470 Fax: 501/513-4480

Chris	
Tommy	
Melissa	ML
Mitch	
Lindsey	



February 16, 2016

Marvin Sutterfield
Stone Bank
P.O. Box 2750
Mountain View, AR 72560

Dear Mr. Sutterfield:

The U.S. Fish and Wildlife Service (Service) has reviewed the information supplied in your letter dated February 10, 2016, regarding the proposed construction of five poultry houses for Cody Bradley near the city of Pocahontas, Randolph County, Arkansas. Our comments are submitted in accordance with the Endangered Species Act of 1973 (ESA; 87 Stat. 884, as amended 16 U.S.C. 1531 et seq.) and Bald and Golden Eagle Protection Act (16 U.S.C. 668-668d).

The Service concurs with your determination that the proposed project may affect, but is not likely to adversely affect the Pink Mucket (*Lampsilis abrupta*), Indiana Bat (*Myotis sodalis*), Pondberry (*Lindera melissifolia*), Scaleshell (*Leptodea leptodon*), Rabbitsfoot (*Quadrula cylindrica cylindrica*), Snuffbox (*Epioblasma triquetra*), Curtis Pearlymussel (*Epioblasma florentina curtisi*), Ozark Hellbender (*Cryptobranchus alleganiensis bishopi*), and the Northern Long-eared Bat (*Myotis septentrionalis*).

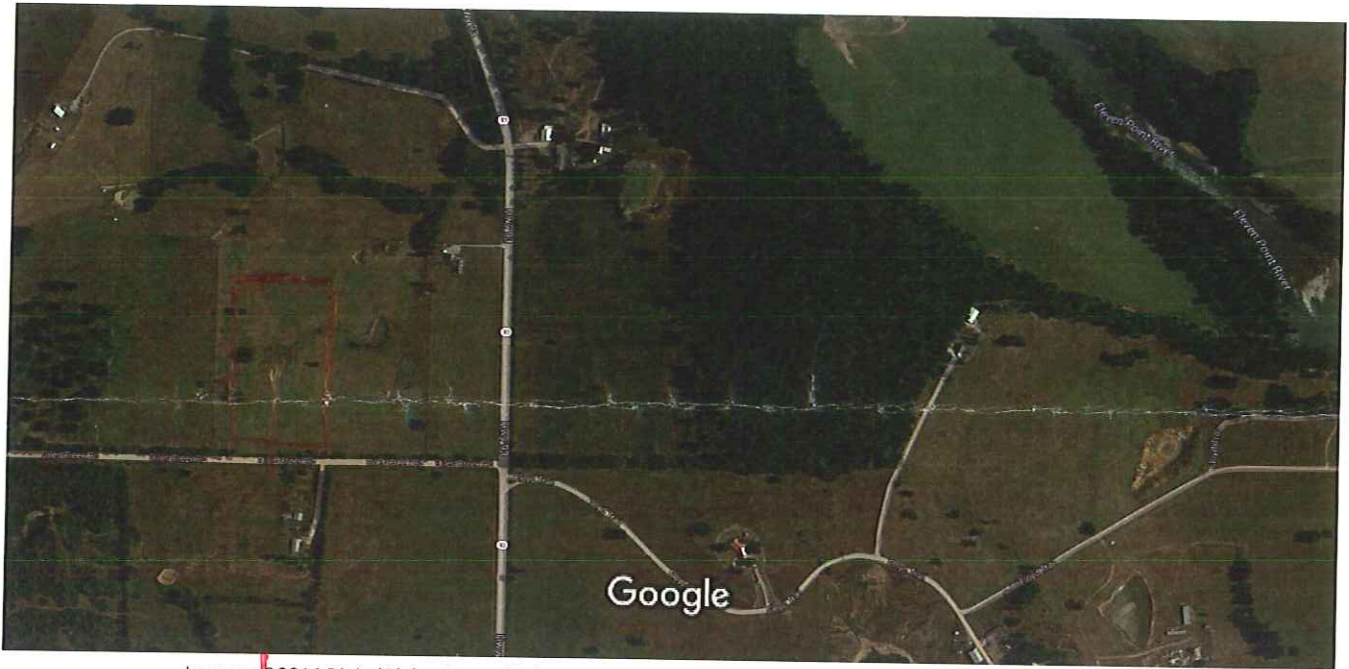
Please be aware Bald Eagle is not protected under the ESA. Bald Eagles are protected under the Bald and Golden Eagle Protection Act (16 U.S.C. 668 et seq.).

We appreciate your interest in the conservation of endangered species. If you have any questions, please contact the Arkansas Ecological Services Staff at (501) 513-4487.

Sincerely,

Melvin Tobin
Project Leader

Google Maps Dalton, AR 72455

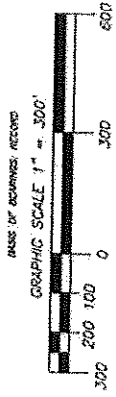
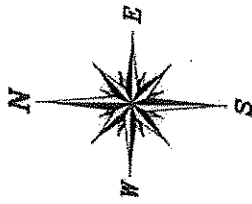


Imagery ©2016 DigitalGlobe, State of Arkansas, USDA Farm Service Agency, Map data ©2016 Google 200 ft



36.445749
-91.186343

SURVEY FOR ELEVEN POINT INVESTMENTS - RANDOLPH COUNTY, ARKANSAS



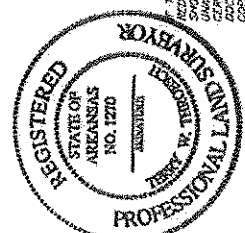
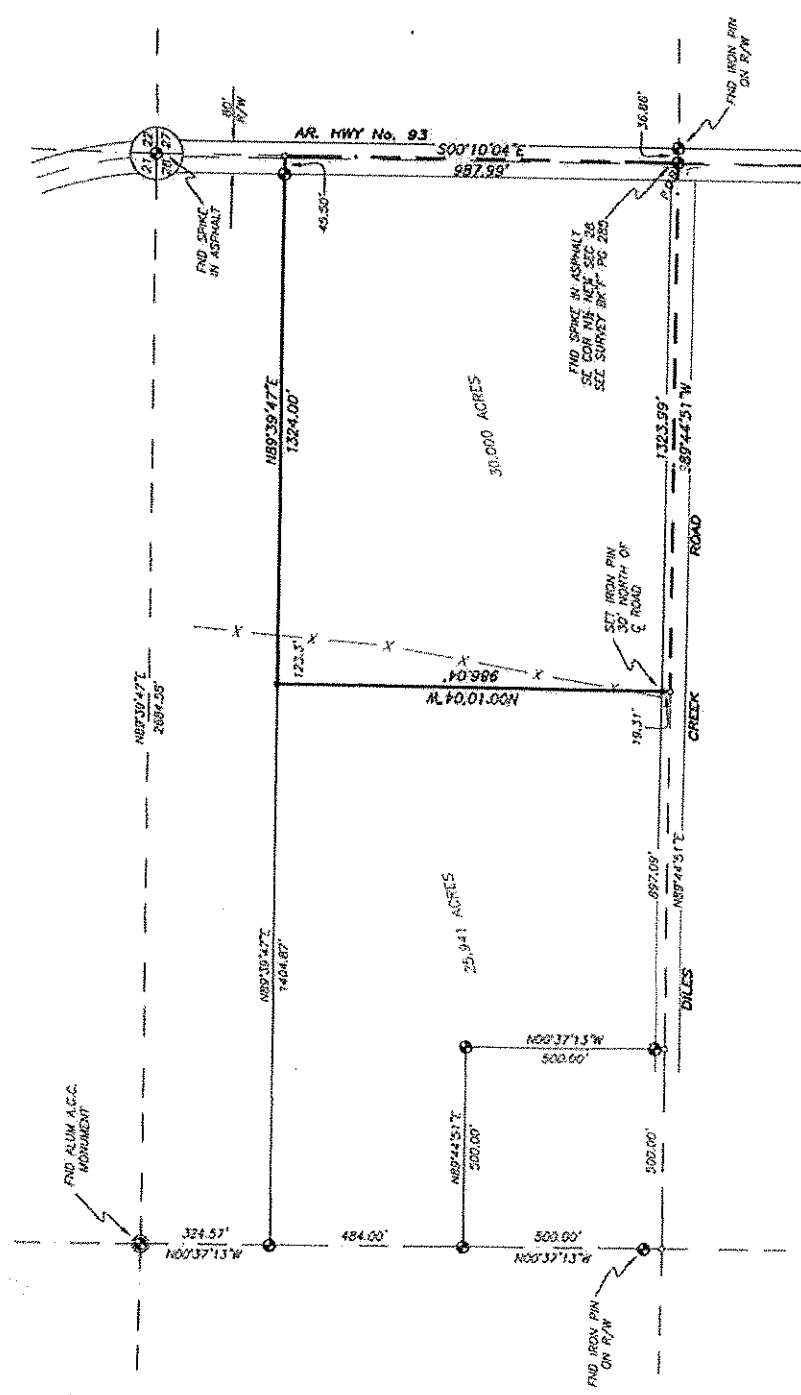
LEGEND

- ⊙ FOUND A.G.C. MONUMENT
- ⊙ FOUND 1/2" IRON PIN (UNLESS NOTED)
- SET 1/2" REBAR (UNLESS NOTED)
- COMPUTED CORNER
- X — WIRE FENCE LINE

PROPERTY DESCRIPTION:

Part of the NE 1/4 of the NE 1/4 of Section 28, Township 21 North Range 2 West, more particularly described as follows:

Beginning at the Southeast corner of said NE 1/4 NE 1/4, thence S89°44'51"W along the South line thereof, 1323.99 feet; thence N00°10'04"W parallel with the East line, 986.04 feet; thence N89°39'47"E, 1324.0 feet; thence S00°10'04"E along the East line of said NE 1/4 NE 1/4, 987.99 feet to the point of beginning, containing 30.000 Acres. **SUBJECT** to the right-of-way for Ar. Hwy No. 93 along the East line and Dices Creek Road along the South line thereof.



SURVEYOR'S NOTE:
I HEREBY DECLARE THAT THE SURVEY SHOWN ON THIS PLAT WAS MADE BY ME OR UNDER MY DIRECTION ON JANUARY 21, 2004 THE RESULTS OF THIS SURVEY ARE REPRESENTED ON THIS PLAT TO THE BEST OF MY PROFESSIONAL KNOWLEDGE AND BELIEF AND ENCROUCHMENTS, IF ANY, ARE AS SHOWN HEREON.

BY:
TERRY W. THROESCH
PROFESSIONAL LAND SURVEYOR
ARKANSAS NO. 1270

DeCLERK - THROESCH
CIVIL ENGINEERING & LAND SURVEYING
114 PIZUEN ST.
POCAHONTAS, ARKANSAS 72455
JANUARY 21, 2005 TW/TGT 04293
500 214 C/W 0 28 000 01 1270

BKF Pg 310

THE SURVEYOR'S SIGNATURE IS NOT TO BE COLORED. THE PLAT MUST BE COPIED AND SHOULD BE ASSIGNED TO COPIES THAT UNAUTHORIZED ALTERATIONS. THE DOCUMENT SHALL NOT APPLY TO ANY COPIES.