

Chris	OS
Melissa	ML
Tommy	TJ
Mitch 5/21	OK
Jason	
Lindsey	

# United States Department of the Interior



FISH AND WILDLIFE SERVICE  
 110 S. Amity Road, Suite 300  
 Conway, Arkansas 72032  
 Tel.: 501/513-4470 Fax: 501/513-4480

May 26, 2015

Marvin Sutterfield  
 Ozark Heritage Bank  
 P.O. Box 2750  
 Mountain View, AR 72560

Dear Mr. Sutterfield:

The U.S. Fish and Wildlife Service (Service) has reviewed the information supplied in your letter, dated May 7, 2015, regarding the proposed construction of four poultry houses for Craig Rushing near the city of Mountain View, Stone County, Arkansas. Our comments are submitted in accordance with the Endangered Species Act (ESA; 87 Stat. 884, as amended 16 U.S.C. 1531 et seq.) and Bald and Golden Eagle Protection Act (16 U.S.C. 668-668d).

The Service concurs with your determination that the proposed construction may affect, but is not likely to adversely affect the Indiana Bat (*Myotis sodalis*), Gray Bat (*Myotis grisescens*), Northern Long-eared Bat (*Myotis septentrionalis*), Cave Crayfish (*Cambarus zophonastes*), Yellowcheek Darter (*Etheostoma moorei*), or Speckled Pocketbook (*Lampsilis streckeri*).

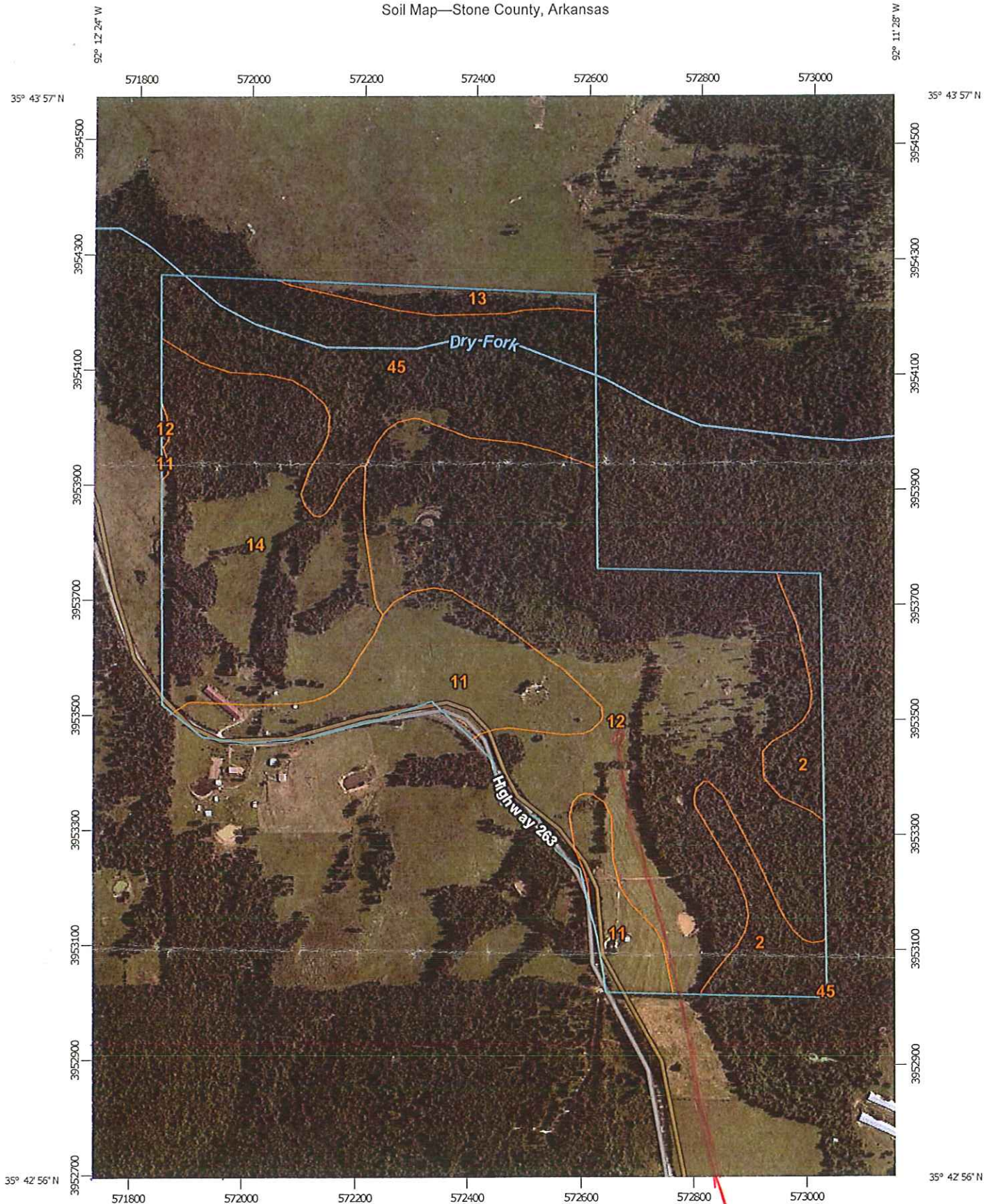
Please be aware Bald Eagle is not protected under the ESA. Bald Eagles are protected under the Bald and Golden Eagle Protection Act (16 U.S.C. 668 et seq.).

We appreciate your interest in the conservation of endangered species. If you have any questions, please contact the Arkansas Ecological Services Staff at (501) 513-4487.

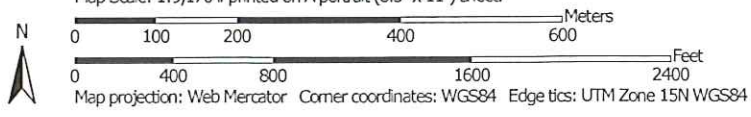
Sincerely,

Melvin Tobin  
 Acting Project Leader

Soil Map—Stone County, Arkansas



Map Scale: 1:9,170 if printed on A portrait (8.5" x 11") sheet.



35.722432  
-92.196467

## Map Unit Legend

Stone County, Arkansas (AR137)			
Map Unit Symbol	Map Unit Name	Acres in AOI	Percent of AOI
2	Ceda gravelly fine sandy loam, frequently flooded	14.2	6.2%
11	Enders very stony sandy loam, 20 to 40 percent slopes	30.0	13.1%
12	Estate-Portia-Moko association, 8 to 20 percent slopes, stony	93.3	40.6%
13	Estate-Portia-Moko association, steep	4.7	2.0%
14	Healing silt loam, 1 to 3 percent slopes, rarely flooded	46.9	20.4%
45	Steprock-Nella-Mountainburg complex, 40 to 60 percent slopes	40.6	17.7%
<b>Totals for Area of Interest</b>		<b>229.8</b>	<b>100.0%</b>



Bangs, Alyssa <alyssa\_bangs@fws.gov>

---

## Johnathan Robinson Concurrence

---

Marvin Sutterfield <MSutterfield@ozarkheritagebank.com>

Tue, May 26, 2015 at 6:48 AM

To: "Bangs, Alyssa" <alyssa\_bangs@fws.gov>

Chris Davis project is in a field & will be using existing road. There are no trees to be cleared.

Craig Rushing project is in a field & will be using existing entry off of highway. No trees to be cleared.

Thank You,  
Marvin Sutterfield

Sent from my iPhone  
[Quoted text hidden]