

Chris		CD
Melissa		ML
Tommy		TF
Mitch	5/21	OK
Jason		
Lindsey		

IN REPLY REFER TO:

ates Department of the Interior



SH AND WILDLIFE SERVICE

110 S. Amity Road, Suite 300

Conway, Arkansas 72032

Tel.: 501/513-4470 Fax: 501/513-4480

May 21, 2015

Marvin Sutterfield
 Ozark Heritage Bank
 P.O. Box 2750
 Mountain View, AR 72560

Dear Mr. Sutterfield:

The U.S. Fish and Wildlife Service (Service) has reviewed your letter dated May 15, 2015, regarding the proposed construction of two broiler houses for Tiffany Verser near the city of Rushing, Stone County, Arkansas. Our Comments are submitted in accordance with the Endangered Species Act (ESA; 87 Stat. 884, as amended 16 U.S.C. 1531 et seq.) and the Bald and Golden Eagle Protection Act (16 U.S.C. 668-668d).

The Service concurs with your determination that the proposed project may affect, but is not likely to adversely affect the Gray Bat (*Myotis grisescens*), Indiana Bat (*Myotis sodalis*), Cave Crayfish (*Cambarus zophonastes*), Speckled Pocketbook (*Lampsilis streckeri*), Yellowcheek Darter (*Etheostoma moorei*), or Northern Long-eared Bat (*Myotis septentrionalis*).

Please be aware Bald Eagle is not protected under the ESA. Bald Eagles are protected under the Bald and Golden Eagle Protection Act (16 U.S.C. 668 et seq.).

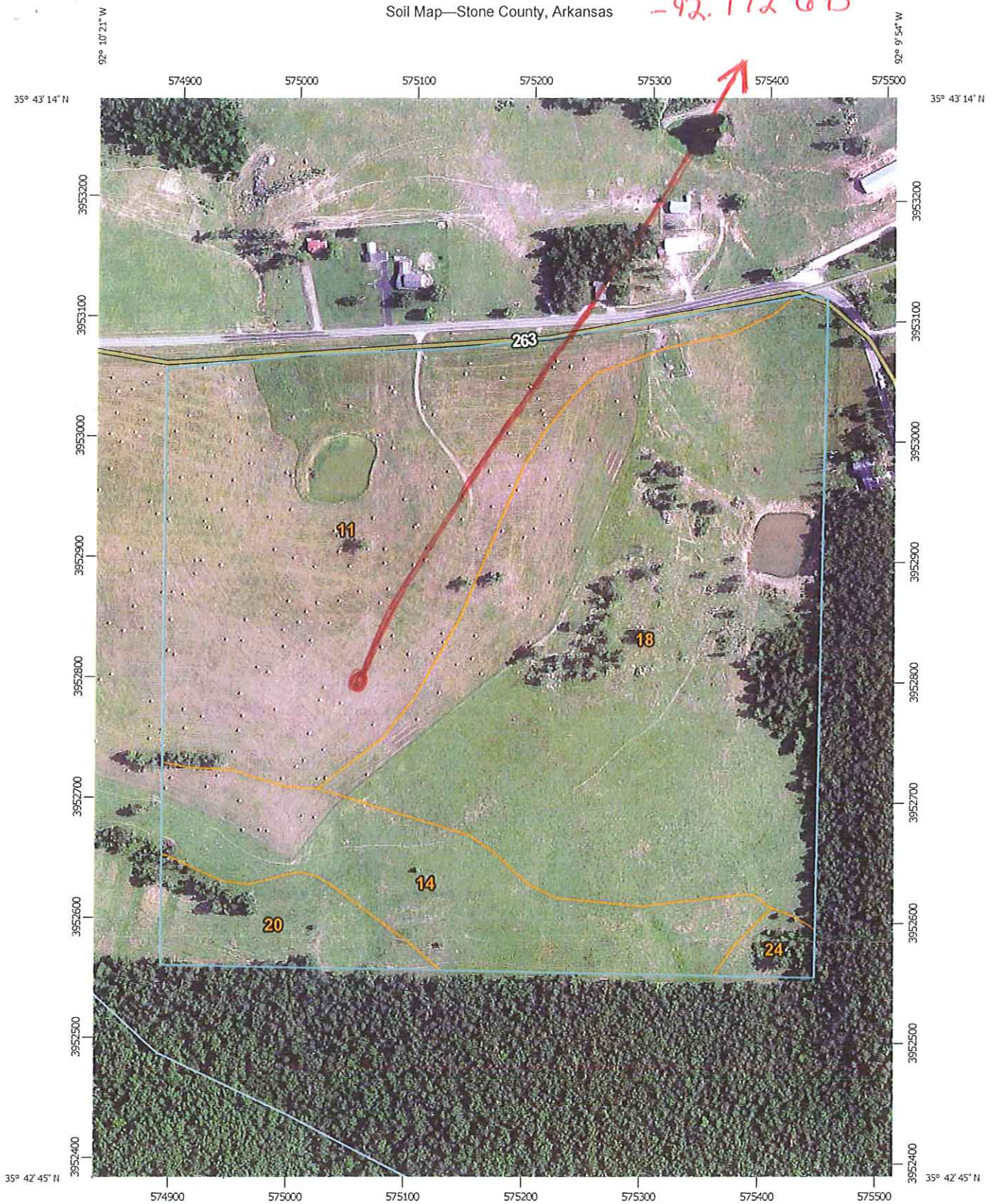
We appreciate your interest in the conservation of endangered species. If you have any questions, please contact the Arkansas Ecological Services Staff at (501) 513-4487.

Sincerely,

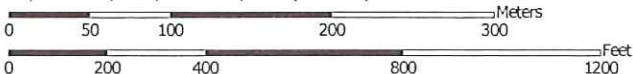
Melvin Tobin
 Acting Project Leader

Soil Map—Stone County, Arkansas

35.717648
-92.172645



Map Scale: 1:4,380 if printed on A portrait (8.5" x 11") sheet.



Map projection: Web Mercator Corner coordinates: WGS84 Edge ticks: UTM Zone 15N WGS84



Natural Resources
Conservation Service

Web Soil Survey
National Cooperative Soil Survey

4/15/2015
Page 1 of 3